

Top Plates for TAR | SP-109

RoHS Catalog Code W6061

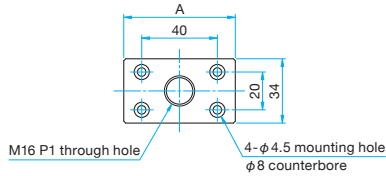
- Allows for Post Holders with M16P1 threads to be used on top of rack and pinion stages.



Outline Drawing

SP-109-1/2

Hexagonal socket head cap screw M4×6...4 screws



Part Number	A (mm)
SP-109-1	59
SP-109-2	79

Connection Example

Post holder etc. (M16 P1)	Post holder etc. (M16 P1)
SP-109-1	SP-109-2
TAR-34601	TAR-34801
TAR-38601D	TAR-34141
TAR-34602	TAR-38801D
	TAR-38141D
	TAR-34802

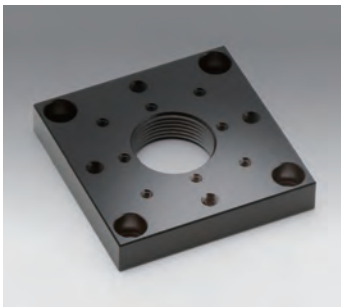
Specifications

Primary material: Aluminum
Finish: Black Anodized

Part Number	Weight [kg]
SP-109-1	0.03
SP-109-2	0.04

Conversion Plate | SP-113N

RoHS Catalog Code W6086



Allows attachment of a M16 female pole (PO) to □40 × 40 mm stages.

- Can attach a AIS-40B tilt stage, SHA-40 sample holder, or a MPH-B polarizer holder to the □40×40 mm stage.

Specifications

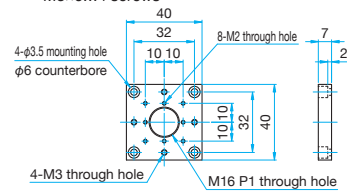
Primary material: Aluminum
Finish: Black Anodized

Part Number	Weight [kg]
SP-113N	0.02

Outline Drawing

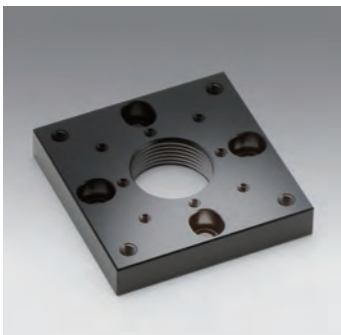
SP-113N

Hexagonal socket head cap screw M3×6...4 screws



Conversion Plate | SP-114N

RoHS Catalog Code W6087



- Allows attachment of a M16 female pole (PO) to □40×40 mm stages and rotation stages.
- Can attach the □40×40 mm metric stages, SHA-25 sample holders or MPH-B polarizer holders to the rotation stages (KSP-406, KSW-406).

Specifications

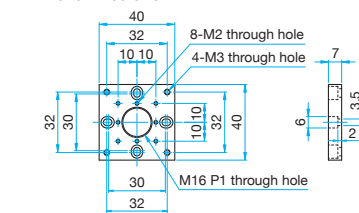
Primary material: Aluminum
Finish: Black Anodized

Part Number	Weight [kg]
SP-114N	0.02

Outline Drawing

SP-114N

Hexagonal socket head cap screw M3×6...4 screws



Bottom Plates for KSPA 806M, 1006M | SP-117

RoHS Catalog Code W6063

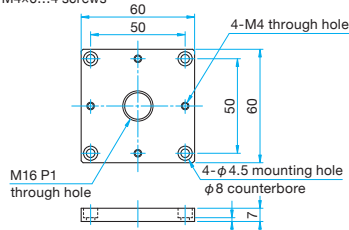
- Mounting hole converting adapter for rotation stages (KSPA-806M and 1006MH).



Outline Drawing

SP-117

Hexagonal socket head cap screw M4×6...4 screws



Connection Example

Post holder etc. (M16 P1)
KSPA-806M, 1006MH
SP-117
M4 50×50

Specifications

Primary material: Aluminum
Finish: Black Anodized

Part Number	Weight [kg]
SP-117	0.06