

## Top Plate Adapters for TAS-2060 | SP-127-1

RoHS Catalog Code W6069

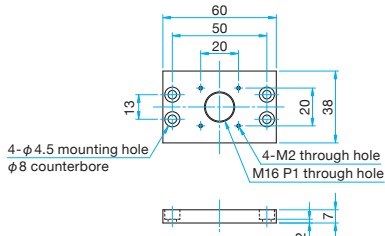
- Allows for 25 mm stages and M16P1 post holders to be mounted on top of TAS-20601 and 20602.



### Outline Drawing

#### SP-127-1

- Hexagonal socket head cap screw M4×6...4 screws



### Connection Example

Post holder etc. (M16 P1)  
25×25 stage (M2 20×20)

#### SP-127-1

TAS-20601  
TAS-20602

### Specifications

Primary material: Aluminum  
Finish: Black Anodized

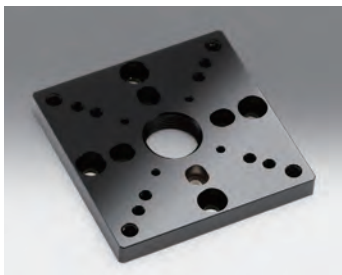
Part Number	Weight [kg]
SP-127-1	0.04

## Adapter Plates | SP-129

RoHS Catalog Code W6071

- Allows stages and post holders to be mounted onto KSP-406 and other stages (see chart).

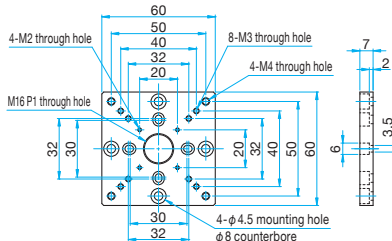
Reference D041



### Outline Drawing

#### SP-129

- Hexagonal socket head cap screw M3×6...4 screws



### Connection Example

Post holder etc. (M16 P1)  
25×25 stage (M2 20×20)  
40×40 stage (M3 32×32)  
60×60 stage (M4 50×50)

#### SP-129

KSP-406 (M3 φ30)  
40×40 stage (M3 φ32)  
60×60 stage (M4 φ50)

### Specifications

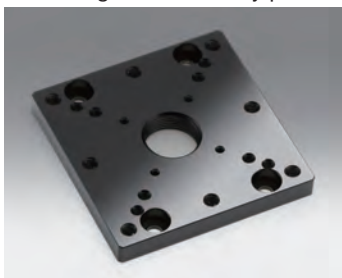
Primary material: Aluminum  
Finish: Black Anodized

Part Number	Weight [kg]
SP-129	0.06

## Adapter Plates | SP-130

RoHS Catalog Code W6072

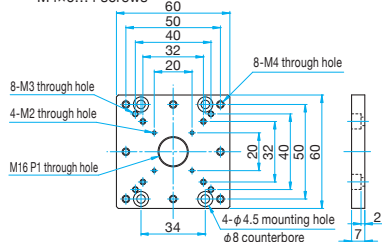
- Allows stages and post holders to be mounted onto MB-PB-CB magnet base family parts.



### Outline Drawing

#### SP-130

- Hexagonal socket head cap screw M4×6...4 screws



### Connection Example

Post holder etc. (M16 P1)  
25×25 stage (M2 20×20)  
40×40 stage (M3 32×32)  
60×60 stage (M4 50×50)

#### SP-130

MB-PB-CB

### Specifications

Primary material: Aluminum  
Finish: Black Anodized

Part Number	Weight [kg]
SP-130	0.06

## Adapter Plates | SP-131

RoHS Catalog Code W6073

- Allows stages and post holders to be mounted on top of rack and pinion stages (see chart).

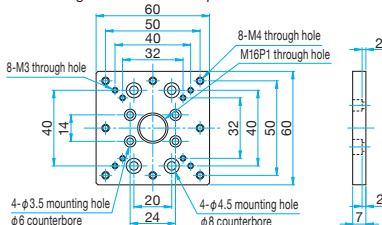
Reference D041



### Outline Drawing

#### SP-131

- Hexagonal socket head cap screw M4×6...4 screws
- Hexagonal socket head cap screw M3×6...4 screws



### Connection Example

Post holder etc. (M16 P1)  
40×40 stage (M3 32×32)  
60×60 stage (M4 50×50)

#### SP-131

TAR-34403L (M3 14×24)  
TAR-34/38 (M4 20×40)

### Specifications

Primary material: Aluminum  
Finish: Black Anodized

Part Number	Weight [kg]
SP-131	0.06