

Darkroom Kits



Clean Darkroom Kits

DRU
DRUC

Catalog Code W6016

These darkrooms are composed of a steel frame and block out curtains.

- All five sides of the room are covered with a black-out curtain.
- White LED penlights are available from OptoSigma to check work while in the darkroom.
- Please consider size of your equipment/table when selecting a darkroom size.

Type	Darkroom Kits DRU	Clean Darkroom Kits DRUC
Exterior		
Features	<ul style="list-style-type: none"> ● Allows easy installation of a darkroom space indispensable for image measurements, exposure testing, and optical measurements. ● Easy to dismantle, making it convenient for transportation and storage. 	<ul style="list-style-type: none"> ● Allows easy installation of a clean darkroom space indispensable for highly accurate and reliable optical measurements, testing, and other tasks. ● HEPA filters provide Class 100 dust collection efficiency in terms of cleanliness at the air outlet, with wind speed of approximately 0.5m/s. Although it varies according to the darkroom size, the cleanliness inside the darkroom is roughly Class 7 (Class 10,000) within 5 minutes after power-up. ● Fitted with an exhaust type compact ventilation fan.
Guide	Material	Obverse side: Polyester, Reverse side: Neoprene rubber
Black-out Curtain	Light Blocking Effect	Class 1 shading ability (99.99~100%)
	Fire Retardancy	Fire retardant

Guide

- ▶ This product comes as a kit including a black-out curtain, pipes and a plastic hammer.
- ▶ Estimated time required for assembly: (e.g.) DRU-1816 will take about 30 minutes (with two people).
- ▶ To ensure optimal cleanliness, wear clean room garments while working in a darkroom. Clean room garments are available for purchase.

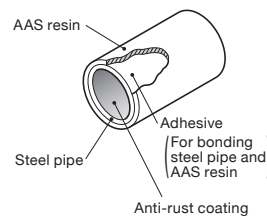
Attention

- ▶ The blackout curtains have a flap-type entrance where the blackout curtain overlaps in the center entrance way. Curtain-rail-type blackout curtains are also available, but reduce the light blocking. Contact our Sales Division for more information.
- ▶ Darkroom kits include curtain tie clips.
- ▶ Custom sizes or shapes not listed in the catalog are available. Contact our Sales Division for more information.

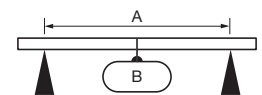
Frame Pipes

The pipes used for the skeleton framework of the darkroom kits and clean darkroom kits are $\phi 28\text{mm}$ steel frames. The structure and strength are as shown in the following figure. These pipes can be readily connected and assembled with T- and L-shaped joint pipes using a plastic hammer.

Structure



Strength



A [Dimensions]	B [Max. Strength]
450mm	about 1,666N (170kgf)
900mm	about 784N (80kgf)
1,800mm	about 392N (40kgf)

Specifications

Darkroom Kits Part Number	Clean Darkroom Kits Part Number	Frontage [mm]	Depth [mm]	Height [mm]
DRU-1212	DRUC-1212	1,200	1,200	2,000
DRU-1515	DRUC-1515	1,500	1,500	2,000
DRU-1816	DRUC-1816	1,800	1,600	2,000
DRU-2017	DRUC-2017	2,000	1,700	2,000
DRU-2219	DRUC-2219	2,200	1,900	2,000
DRU-2819	DRUC-2819	2,800	1,900	2,000
DRU-3020	DRUC-3020	3,000	2,000	2,000

N-5820P/DRU/LU-101

White LED illumination



This is a LED illumination kit for a simple darkroom unit. It can be attached with a frame (ϕ 28mm pipe) of the unit. Brightness is equivalent to fluorescent lamp 20W.

- LED Color: Main light : daylight color, Auxiliary light: bulb color
- AC Power: 100V/50Hz, 60Hz
- Power consumption: 9W
- Illuminance: 217lx (At the point of 1m from the illumination in a darkroom)
- Total luminous flux: 420lm
- Size: 582×70×44(H)mm
- Weight: 0.96kg
- Power ON/OFF: by a pull code
- Accessories: (1) 5m Extension cord (2) Cable clip ×5pcs

Guide

► Purchase commercial fluorescent lights for replacement.

Specifications

Part Number	N-5820P-D28
-------------	-------------

White LED Light



Specifications

Part Number	LU-101
-------------	--------

Ventilation Fans



Ventilation fans designed to keep out external light. They are two types: an exhaust version (DRU-VF) and a suction version (DRU-IF).

- Size: (W)160×(D)160×(L)193mm (excluding protrusions)
- Weight: 2.2kg
- Power cord: 3m (with switch)
- Power source: AC100V±10% 50/60Hz
- Power consumption: 14W
- Fan suction/exhaust capability: 2.7m³/min. for the motor main unit.

Guide

► Additional processing of black-out curtain is required to install this product in a darkroom. Pipes required for installation come with this product.

Part Number	Type
DRU-IF	Suction type
DRU-VF	Exhaust type

Head Twist Switch Dust Proof & Water Proof (IP54)

- Pen Clip Included
- Brightness: 18lm
- battery: AAA alkaline batteries × 2 this
- battery Life: About 12 hours
- Accessories: Pen clip, test for battery

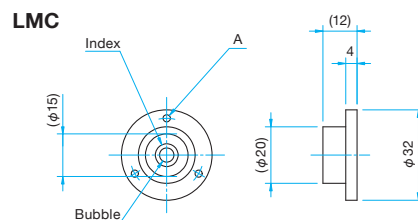
LMC/LMT

Levels convenient for installing a vibration isolator, optical laboratory bench, or various other instruments.



- The LMC type is round, and the LMT type is T-shaped.
- The LMC type provides horizontal leveling using the bubble and target. They can be secured on equipment or optical system using their mounting holes.
- The LMT type allows simultaneous leveling in two directions, vertical and horizontal.

Outline Drawing



Specifications

Part Number	External Size [mm]	A [mm]	Sensitivity [°]	Material	Finish	Weight [kg]
LMC-2	ϕ 32	3- ϕ 2.5, PCD ϕ 27	1	Aluminum	Black coating	0.022
LMC-3	ϕ 32	3- ϕ 2.5, PCD ϕ 26	1	Brass	Chrome plated	0.028
LMT-1	45×35	—	1	Aluminum	Black coating	0.027